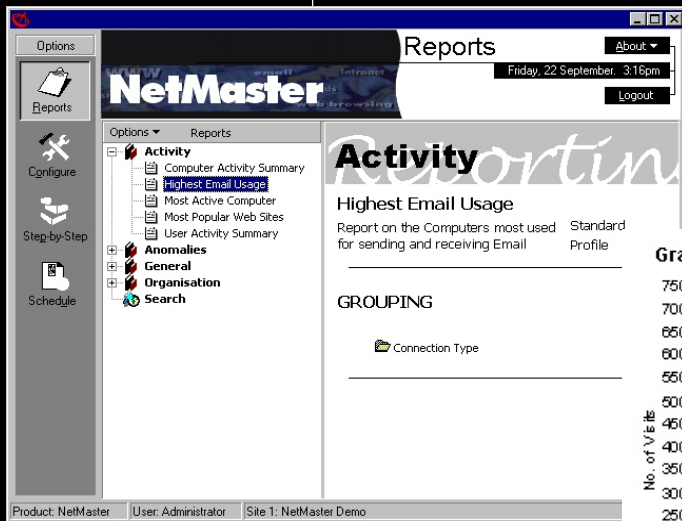


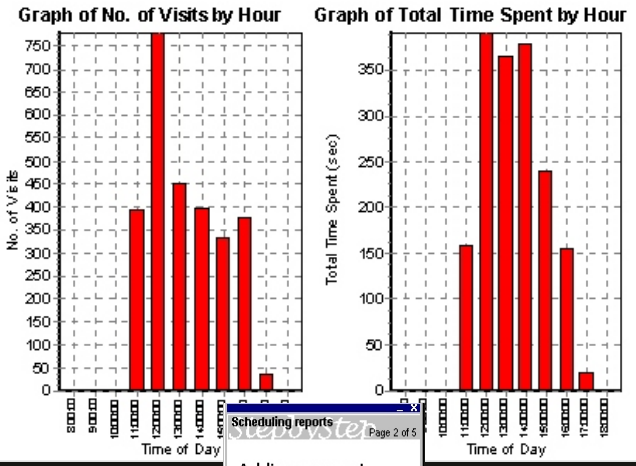
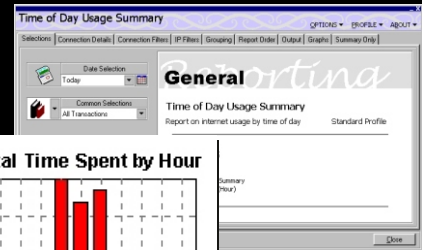
CommSoft

NetMaster

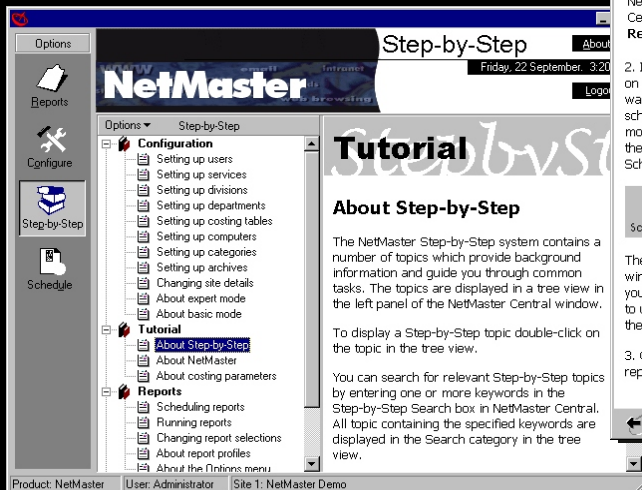
Monitor Online Time for Real Net Gains



Reports show key trends to assist with Internet Resource Management



Internet use is tracked and can be viewed in detail and summary



Scheduling reports

Adding a report to the Scheduler

1. In NetMaster Central select Reports.
2. In the Report List, click on the report icon you want to add to the scheduler, hold down the mouse button and drag the report icon onto the Schedule button.
3. Click OK to add the report to the Scheduler.

The Schedule Editor window appears, allowing you to select the printer to use and when to run the report.

Navigation buttons: Back, Next

Easy-to-use and install with the Step-by-Step tutorial

TURN INTERNET USE INTO A COMPETITIVE ADVANTAGE

NetMaster tracks and logs online activity to preset criteria. Monitor Internet use to optimize time spent browsing and email traffic to drive down costs.

Internet Management Tools that Navigate with a Clear View

NetMaster displays data in real-time for instant group or individual analysis. Information displays showing sites visited and time spent online with reports that give clear statistical data. Control and configure reports for automatic scheduling to save time.

Measure Sales & Marketing Programs with Online Activity Reports

A full range of standard and customised reports ensures that the right person makes the right contact at the right time. Quickly identify who is spending the most time browsing the Internet.

See which sites are visited most often and the cost of the time spent and data downloaded by individual or group summary.

The Financial Benefits are Calculable

Turn online time into on-charge time by allocating Internet charges to preset cost centres. NetMaster is the financial tool that pays with financial benefits, to increase productivity and enhance cost management. Easily reconcile costs with bills, identify anomalies and allocate costs for on-charging.

Identify Network Patterns and Define Optimum Capacity

Define who is online, when and for what purpose, so network capacity decisions can be made quickly and efficiently. Capture LAN data as it passes to and from the Internet to assist with capacity decisions.

Get up to Speed First by Using the Step-by-step Tutorial

The Step-by-Step tutorial provides online assistance for easy setup and configuration. Detailed instructions are displayed on the right-hand-side of your screen.

Hardware & Software Requirements

Pentium 233+PC, minimum 64Mb RAM, Running WIN 98+ or NT4+or 2000 Pro Ethernet network adaptor, 1Gb Hdd recommended for data storage

To find out more about how our products can add value to your business visit our website on www.commssoftgroup.com for your nearest NetMaster supplier.

CommSoft

Auckland London Leeds Melbourne Sydney Singapore Johannesburg